

SABRE[®]

ARCHITECTURAL

835 DOOR CLOSER

SUITABLE FOR TIMBER, METAL AND ALUMINIUM DOORS

- Size 2 to 5 spring adjustable
- Suits door widths from 850mm to 1250mm
- Door weight 40kg to 100kg
- 180° opening
- Non handed
- Adjustable back check
- Delayed action
- Parallel arm bracket
- Track arm application available



BACK CHECK



DELAYED ACTION



PARALLEL ARM BRACKET



ADJUSTABLE SPRING STRENGTH



835 DOOR CLOSER

APPLICATIONS

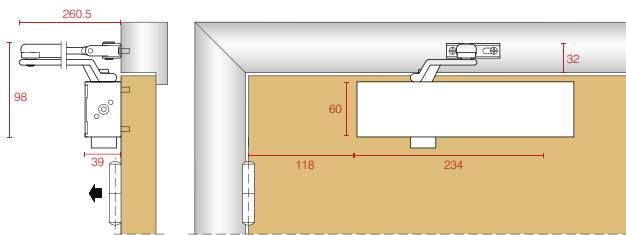
The 835 Door Closer is the practical door closing solution. Complete with all the features and benefits that a multi-function door closer can provide. Its sleek stylish design combined with matching track arms and covers are ideal for any prestige project or specification.

Standard Finishes: SIL = Silver, SSS = Satin Stainless Steel, PSS = Polished Stainless Steel, BLK = Black

STANDARD ARM

PULL SIDE

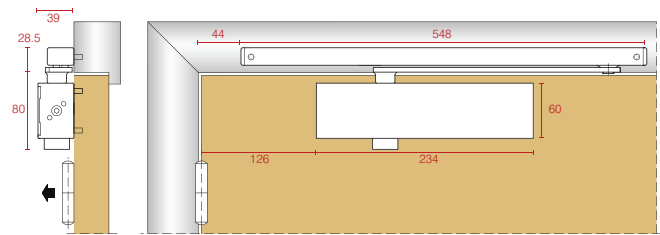
Provided the site conditions allow, an opening of 180° is possible with this installation.



TRACK ARM

PULL SIDE

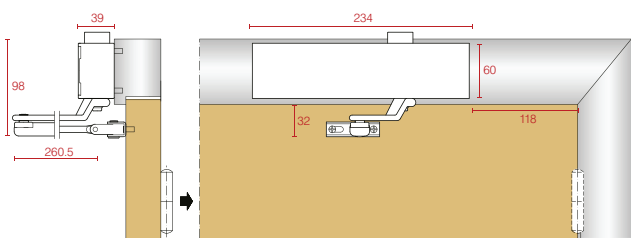
Provided the site conditions allow, an opening of 170° is possible with this installation.



STANDARD TRANSOM

PULL SIDE

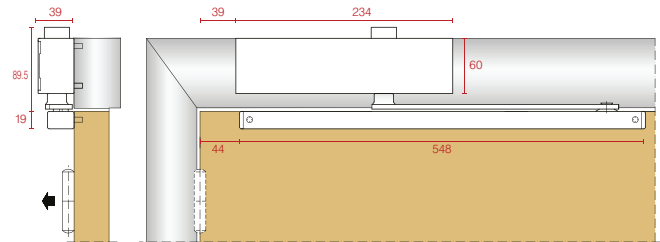
Provided the site conditions allow, an opening of 180° is possible with this installation.



TRACK ARM TRANSOM

PULL SIDE

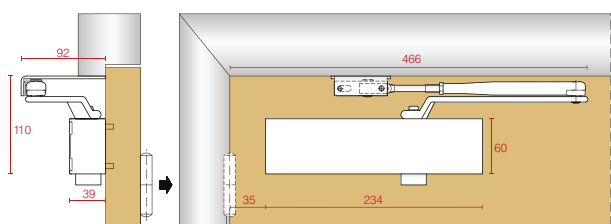
Provided the site conditions allow, an opening of 160° is possible with this installation.



PARALLEL ARM

PUSH SIDE

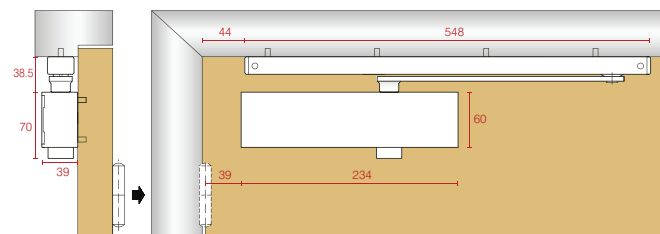
Provided the site conditions allow, an opening of 180° is possible with this installation.



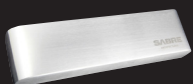
TRACK ARM

PUSH SIDE

Provided the site conditions allow, an opening of 115° is possible with this installation.



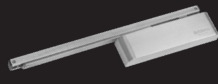
ACCESSORIES



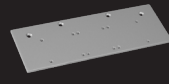
SAB-DC835-COV-SIL
Cover - 732/835



SAB-DCHOA-SIL
Hold Open Arm



Track Arm Including
Hold Open - SIL



SAB-DC835-DP-SIL
Drop Plate - 835



SAB-DC915-PA-SIL
Drop Down PA Bracket